



# Locating and Connecting to a Printer

This document will describe locating and connecting to a CoPilot printer from the Orion desktop message creation software platform.

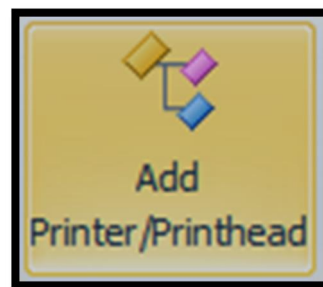
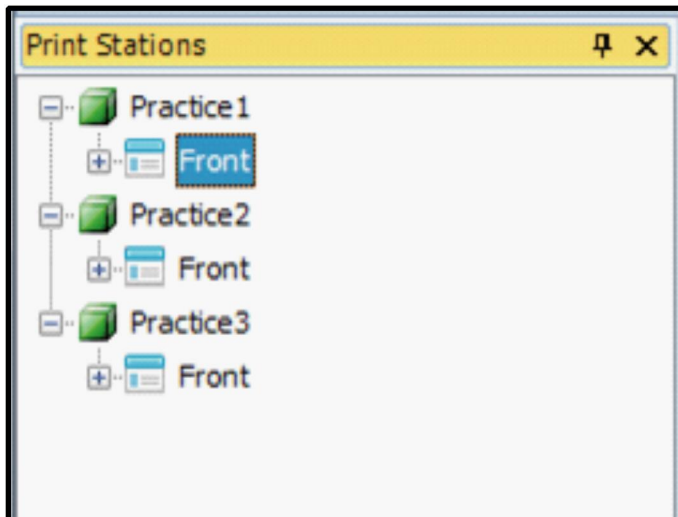
## At the Printer:

Ensure that the intended printer is powered up and connected to a Local Area Network or Wireless Hub.

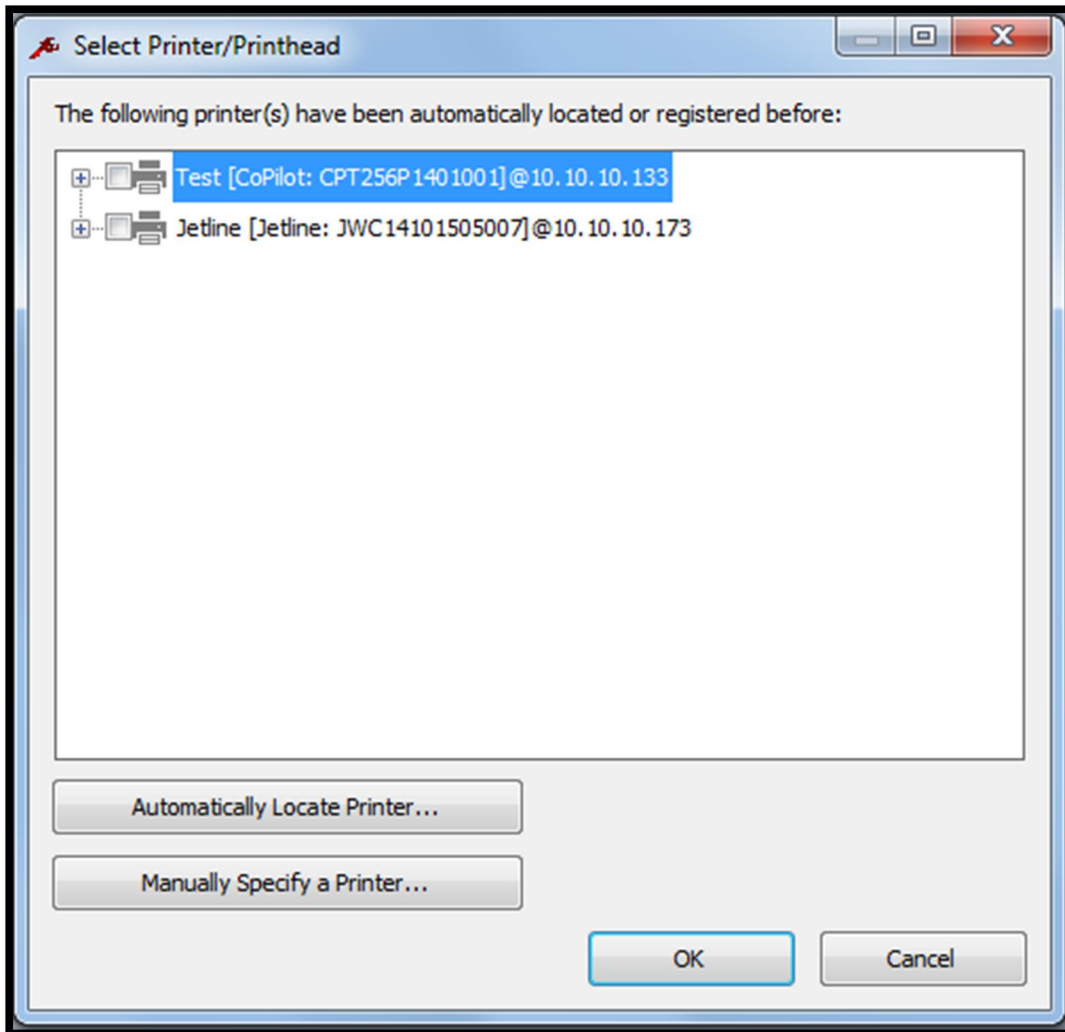
## In Orion™

**Attention!** Printers are assigned to **Print Stations**+ Print stations are the locations where printing will occur. To connect to a printer first assign it to a print station.

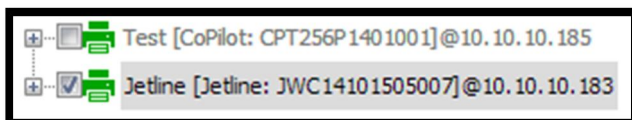
In Orion , highlight the print station and surface where the printer will print and select **Add Printer/Printhead**+from the tools ribbon.



When “**Add Printer/Printhead**” is selected the %**Select Printer/Printhead**+ window will open. The %**Select Printer/Printhead**+ window will display a list of printers that are currently recognized by Orioní .



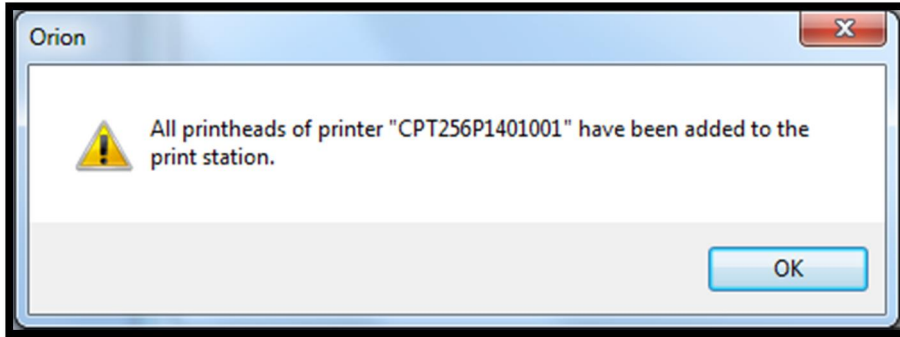
Place a check mark in the box next to the printer you wish to connect with.



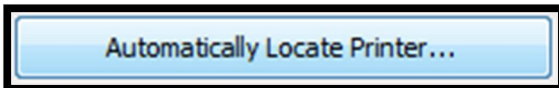
Select “**OK**” and the printer will be added to the currently selected work station.



If a printer has already been assigned to the print station a window will open saying the printer already exists. Just select **OK** to close the window.

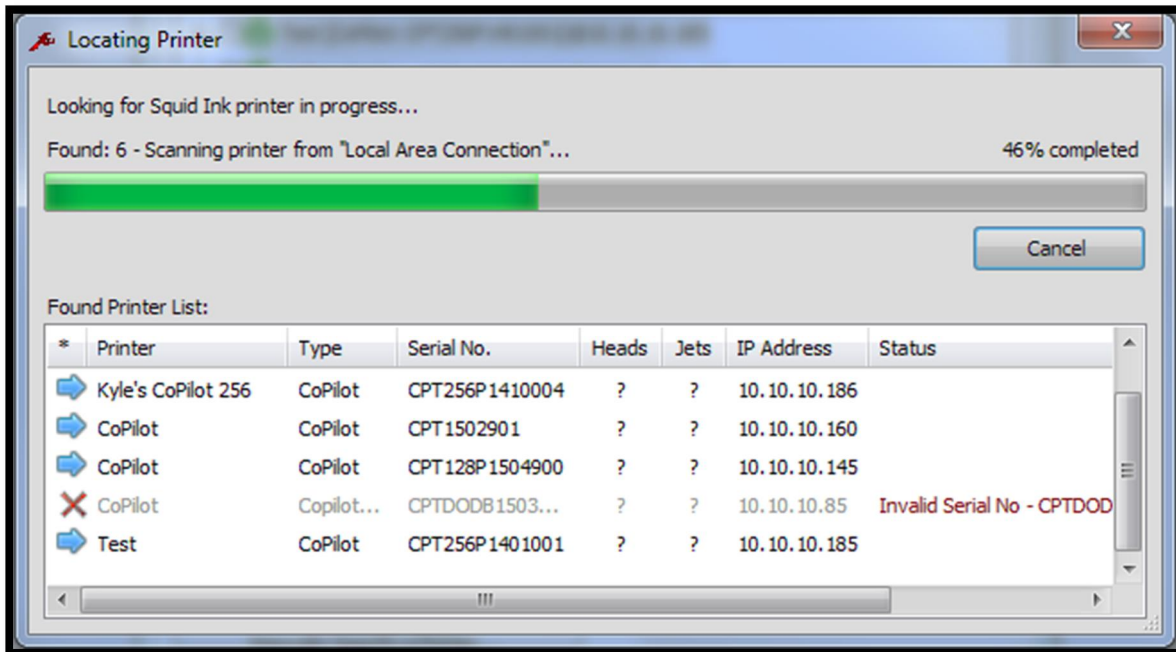


## Automatically Locate Printer...



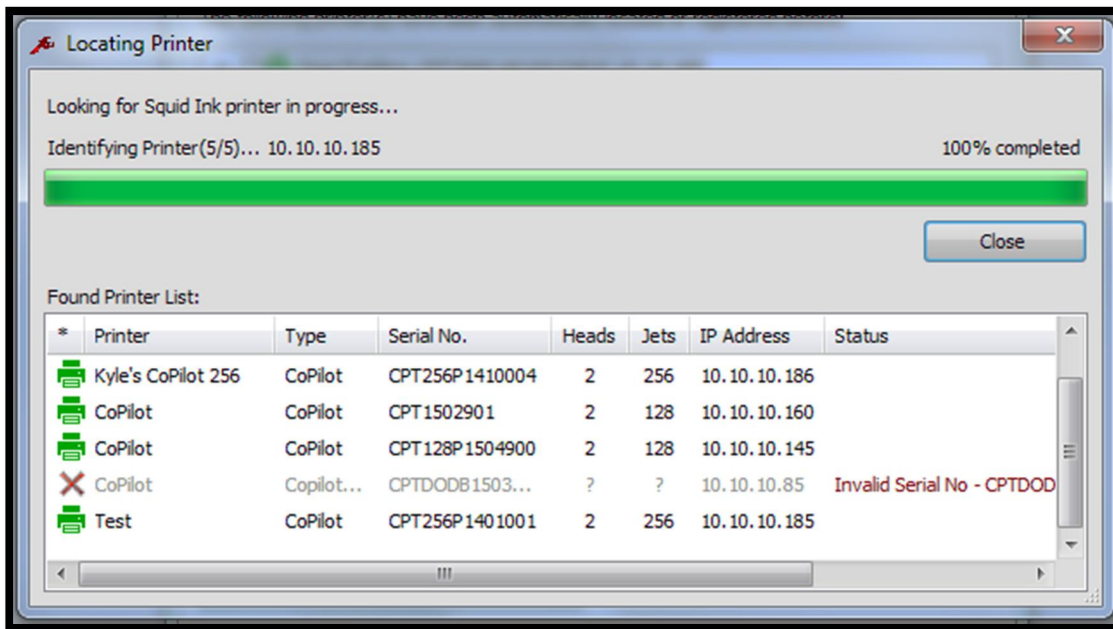
To automatically locate a new printer select **Automatically Locate Printer...** in the **Select Printer/Printhead** window to have Orion search for available printers.

A progress window will display while Orion searches for printers.

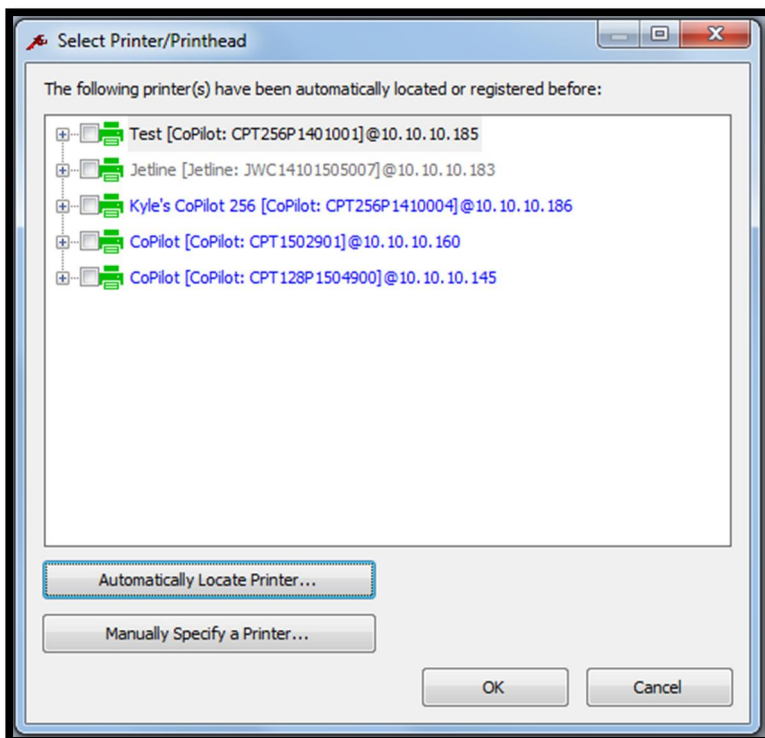




When the search has been completed a list of found printers will display.

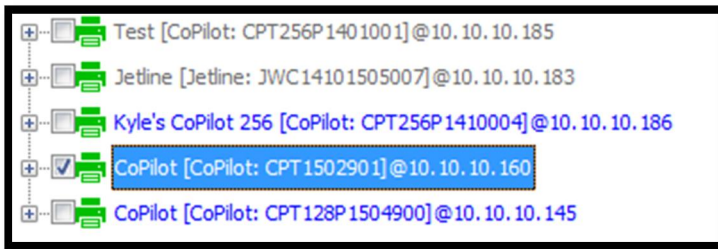


Select **C**lose to close the **L**ocating Printer window.

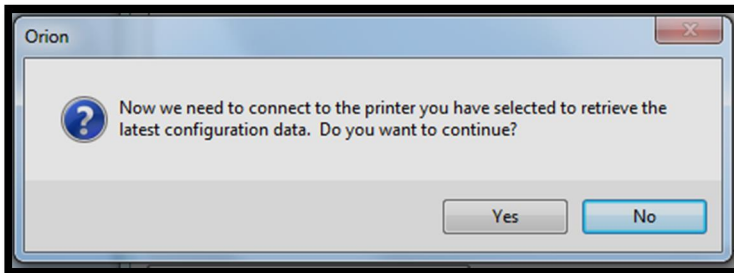




Orion will display an updated list of located printers. Printers that have not been assigned to a print station or connected will display as **Blue**.



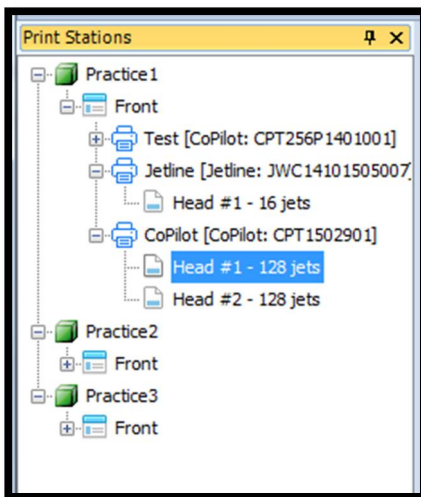
Place a check next to any newly located printers that you wish to assign to the print station and select **OK**.



A window will open asking if you want to connect to the selected printer and retrieve the printer configuration data.

Select **Yes** to connect to the selected printer. A progress window will display briefly.

The newly connected printer will now be displayed in the **Print Station Explorer** list and the **Printer Connection Status** window.






Printer Connection Status										
*	Name	Type	Serial #	IP Address	Head Type	Heads	Jets	Prod. Counter	Ink Level	Last Connected
	Test	CoPilot	CPT256P1401001	10.10.10.185	256-jet Passive	2	256	437	100% 100%	2016/02/02 13:15:42
	Jetline	Jetline	JWC14101505007	10.10.10.183	16-jet 1"	1	16			2016/02/02 13:15:42
	CoPilot	CoPilot	CPT1502901	10.10.10.160	128-jet	2	128			2016/02/02 13:15:42

## Printer Connection Status



The **Printer Connections** Button will toggle the **Printer Connection Status** window off and on. The **Printer Connection Status** list is located at the bottom of the Orion<sup>i</sup> workspace.

You can connect to a printer from the **Printer Connection Status** list.

Printer Connection Status										
*	Name	Type	Serial #	IP Address	Head Type	Heads	Jets	Prod. Counter	Ink Level	Last Connected
	Test	CoPilot	CPT256P1401001	10.10.10.185	256-jet Passive	2	256			2016/02/02 13:15:42
	Jetline	Jetline	JWC14101505007	10.10.10.183	16-jet 1"	1	16			2016/02/02 13:15:42
	CoPilot	CoPilot	CPT1502901	10.10.10.160	128-jet	2	128			2016/02/02 13:15:42

Double clicking on a printer in the **Printer Connection Status** list will connect to the printer and open the **Printer Configuration** window.

**Test[CPT256P1401001]** ×


General

Font List & Ink System

Network Configuration

Print Configuration

**System Information**



Printer type: Copilot  
 Serial number: CPT256P1401001  
 Firmware version: 22.1.21  
 The firmware is up to date  
 Software version: 2.2.15  
 The software is up to date  
 Ink system version: 18  
 The ink system configuration is up to date  
 Printhead software version: N/A | N/A

Install the latest version

**Supported Features**

Setting	Value
Number of printheads allowed	2
Printhead type	256-jet Passive
Security	Disabled
User Data prompts	Enabled
Pre Build	Enabled
Maximum substrate width (columns)	24,000
Maximum characters allowed in file names	105
Maximum number of Text elements	100
Maximum number of Counter elements	16
Maximum number of Date/Time elements	16
Maximum number of Shift elements	16
Maximum number of Barcode elements	16
Maximum number of Graphic elements	16

## Printer Connection Status Icon Colors



In the **Printer Connection Status** list there are small printer icons located next to the printer names. The icons may be **gray**, **green** or **blue** depending on the printer status.



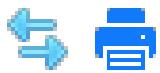
**Gray:** A gray icon will indicate that a printer has been added to the list but Orion doesn't see it. In most cases this is due to the printer being turned off or becoming physically disconnected from the network.






**Green:** A green icon will indicate that Orion recognizes the printer but the printer is not connected.



**Blue:** A blue icon will indicate that the printer is connected to the Orion desktop station.



Back and forth arrows displayed next to a blue printer icon will indicate that the printer is connected and currently being communicated with.

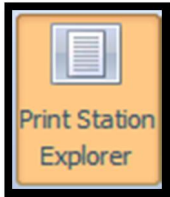
Printer Connection Status										
*	Name	Type	Serial #	IP Address	Head Type	Heads	Jets	Prod. Counter	Ink Level	Last Connected
	Test	CoPilot	CPT256P1401001	10.10.10.185	256-jet Passive	2	256	437	100% 100%	2016/02/03 10:21:03
	Jetline	Jetline	JWC14101505007	10.10.10.183	16-jet 1"	1	16			2016/02/02 13:15:42
	CoPilot	CoPilot	CPT1502901	10.10.10.160	128-jet	2	128	9134	97% 97%	2016/02/03 10:44:32

**Example of Printer Connection Status List**

**Tip!**

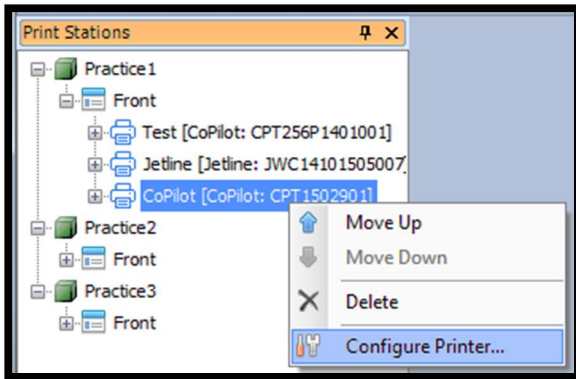
You can drag and drop a printer from the **Printer Connection Status** list to an existing Print Station in the **Print Stations** list to assign the printer to a print station.

## Print Station Explorer



The **Print Station Explorer**+button will toggle the print station list on and off.

After a printer has been assigned to a print station you can connect to that printer through the print station list.



Right click on a printer in the **Print Stations**+list to open a drop down menu.

Select **Configure Printer...**+ to connect to the printer and open the printer configuration window.

